



Now...you're connected.

COMPANY OVERVIEW

Superior Cable Assemblies, LLC (SCA) is an industry specialist in high performance cabling and connectivity solutions. We provide end-to-end connectivity solutions for commercial and military markets. SCA also delivers customized connectivity products and solutions of superior quality, value, and innovation using premium components and the latest technologies.

SCA's leadership has over 130 years of combined experience in design engineering, manufacturing and field service of highly technical and complex cables for aerospace, commercial and military applications.

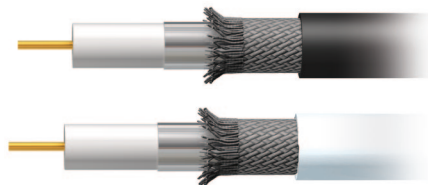
SCA in partnership with Astro Industries, Inc., an ISO 9001: 2008 Certified company, provides Statistical Process Control (SPC) in house quality systems. SPC is a way of life at SCA, delivering quality and performance our customers can count on.

RG6/U Dual Shield Coaxial Cable

Ideal for RF applications including outdoor TV antennas and satellite distribution

RG6/U Dual Shield is ideal for antenna, cable television and satellite installations. The 18AWG copper clad steel center conductor is surrounded by a foam polyethylene dielectric. A bonded aluminum foil and 60% aluminum braid provide 100% shield coverage. This UL listed cable meets UL and CUL specifications for CL1, CL2, CM, CMX and CMG installations. Sweep testing to 3GHz ensures performance at applicable frequencies. To help you keep track of cable used, the cable jacket is sequentially marked every two feet.

- 18AWG copper clad steel center conductor
- A bonded foil and 60% aluminum braid over foil
- Foam polyethylene dielectric
- CM/CL2-rated PVC jacket



- Sweep tested to 3GHz
- Sequential foot marking
- UL listed
- Ideal for RF applications like outdoor TV antennas and cable television

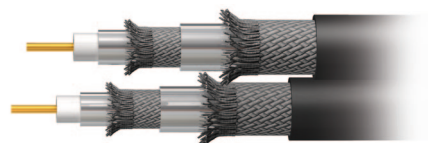
RG6/U Quad Shield Coaxial Cable For the most demanding applications

- Bonded foil plus 60% aluminum braid over another layer of foil plus 40% aluminum braid provide 100% shield coverage
- 18AWG copper clad steel center conductor
- Foam polyethylene dielectric
- CM/CL2-rated PVC jacket
- Swept tested to 3GHz
- Sequential foot marking
- Inner Conductor: 1/1.02 mm (18AWG) copper clad steel
- Insulation: 4.57mm foam PE
- Outer Conductor: Al/P-Foil (bonded) + 0.12mm x 80 Al wire braiding + Al/P/Al-Foil + 0.12mm x 48 Al wire braiding
- Sheath: 7.62mm black PVC (C/UL CMG CL2)
- Ideal for RF applications like outdoor TV antennas and cable television



Dual RG6/U Quad Shield Coaxial Cable Dual construction saves installation time

- Dual construction saves installation time
- 18AWG copper clad steel center conductor
- Bonded foil covered by 60% aluminum braid over foil and 40% aluminum braid provide 100% shield coverage
- Foam polyethylene dielectric
- CM/CL2-rated PVC jacket
- Swept tested to 3GHz
- Sequential foot marking
- Inner Conductor: 1/1.02 mm (18AWG) copper clad steel
- Insulation: 4.57mm foam PE
- Outer Conductor: Al/P-Foil (bonded) + 0.12mm x 80 Al wire braiding + Al/P/Al-Foil + 0.12mm x 48 Al wire braiding
- Sheath: 7.62mm black PVC
- Ideal for RF applications like outdoor TV antennas and cable television



RG6/U & RG59/U Coaxial Cable With Copper Center & 95% Braid

Ideal for composite video, RGBHV video, component video and surveillance systems

Achieving the best picture possible for your composite video installations requires the best cable. Copper clad steel conductors are fine for RF applications like antennas and satellite installations, but may result in poor quality composite video signals. This Coax Cable is designed specifically for installations where you intend to run composite video, RGBHV video, component video and even surveillance systems. This cable has a bare copper center conductor surrounded by a foam polyethylene dielectric, 95% tinned copper braid and PVC jacket. This UL listed cable meets UL and CUL specifications for CL1, CL2, CM, CMX and CMG installations. Sweep tested to 3GHz to ensure performance. To help you keep track of cable used, the cable jacket is sequentially marked every two feet.



- RG6: 18AWG solid bare copper center conductor
- RG59: 20AWG solid bare copper center conductor
- 95% tinned copper shield and CM/CL2-rated PVC jacket
- Sequential foot marking ends at 0ft

Cat6a 600MHz Bulk Cable

The next generation of networking

Cat6a network cables enable 10 Gigabit data transmission over a 4-conductor twisted pair copper cable, allowing connection distances of up to 100m - significantly farther than current Cat6 cabling. The Cat6a draft extends the Cat6 electrical specifications from 250MHz to 500MHz and also proposes a new measurement for Power-Sum Alien Crosstalk to 500MHz. Alien crosstalk is a coupled signal in a disturbed pair arising from a signal in a neighboring cable.

- Ideal for VoIP and IP video
- Supports 10GBase-T and all applications designed for Cat6a or lower cabling
- A center isolation member maintains pair separation for optimal NEXT performance
- Jacket is sequentially numbered enabling the user to know how much cable is left
- Cable diameter is 0.29in
- Drain wire runs under the cable jacket between insulation tape and an aluminum foil tape



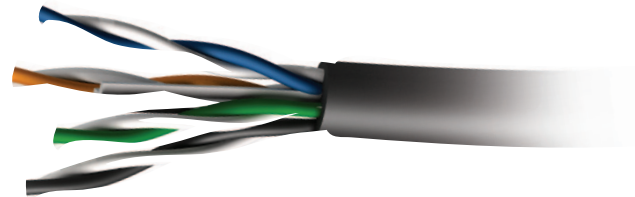
- Meets the following standards:
 - ISO/IEC 11801:2002, Ed. 2 and Ed. 2, Amendment 1 (draft)
 - ANSI/TIA/EIA 568-B.2-1 and 568-B.2-10 (draft)
 - IEC 61156-5:2002
 - UL CMR and CSA FT4 or UL CMP and CSA FT6

Cat6 Bulk Cable

For Gigabit Ethernet applications

With Gigabit Ethernet, broadband, audio/video and security capabilities, Cat6 Bulk Cable is ideal for any critical network installation. Cat6 Bulk Cable is offered in blue and grey for easy identification, and is NEC compliant, meeting EIA/TIA Category 6 standards.

- 4-pair unshielded twisted pair cable
- 24AWG bare copper conductor for superior conductivity
- CSA listed
- Installer-friendly cable shipped in easy to use pull box



Cat6 350MHz Solid Cable

- Durable, high-density polyethylene insulation and PVC jacket
- Meets all Category 6 requirements for high speed, full-duplex, parallel transmission protocols
- CM/CMG-rated for single floor, general purpose use in walls and ceilings

Cat6 Stranded Cable

- Varying left hand lays to minimize crosstalk
- Ideal for 10Base-T (IEEE 802.3[®]), 100Base-TX (IEEE 802.3u[®]), 1000Base-TX, 100Vg-AnyLAN (IEEE 802.12[®]), Token Ring (IEEE 802.5[®]), TP-PMD (ANSI X3T9.5), ATM 155 and all Category 6 requirements for high speed, full-duplex, parallel transmission protocols

Cat6 550MHz Solid Cable

Gigabit Ethernet over copper

- Durable, high-density polyethylene insulation and PVC jacket
- Ideal for 10Base-T (IEEE 802.3[®]), 100Base-TX (IEEE 802.3u[®]), 1000Base-TX, 100Vg-AnyLAN (IEEE 802.12[®]), Token Ring (IEEE 802.5[®]), TP-PMD (ANSI X3T9.5), 550Mbps CDDI, ATM 155, and all Category 6 requirements for high speed, full-duplex, parallel transmission protocols
- CM/CMG-rated for single floor, general purpose use in walls and ceilings

Cat6 550MHz Plenum Rated Cable

For commercial air-plenum installation

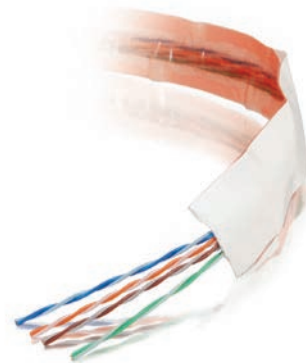
- Varying left hand lays to minimize crosstalk
- Tested to 550MHz to provide additional performance and bandwidth over and above the basic requirements of Cat6 standards
- Durable, low smoke, FEP plenum rated jacket

Taperwire[®] 25ft Flat Cat5 Cable

Put a telephone or network connection in hard-to-reach locations

This Taperwire Flat Cat5 Cable has a self-adhesive backing that allows you to install the wire in plain sight. Many houses are not conducive to running wire after the walls are up. Stucco, plaster and masonry walls can pose challenges for even the most skilled installer. Fire blocking within the wall cavities and foam insulation can be impossible obstacles to overcome. Measuring less than 1/32in thick, you can stick it to the wall and cover it with paint, wallpaper or joint compound to make it disappear. Punchdown to a standard RJ45 jack for a complete installation.

- Ultra flat wire, less than 3/32in thick; hide the wire in plain sight
- Self-adhesive backing holds wire in place

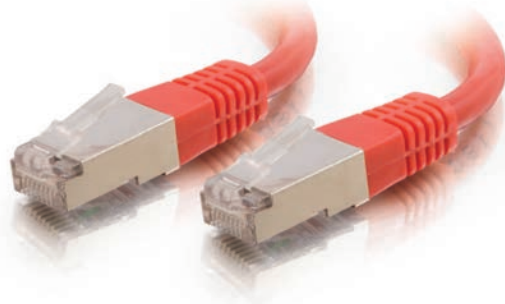


Shielded Cat6 Molded Patch Cables

Get the performance and look of today's high end networks

Protect your high speed network from noise and electromagnetic interference when you connect with our shielded Cat6 patch cable. For voice/data/video distribution, this cable will handle bandwidth-intensive applications up to 550 MHz. Meets all Cat6 TIA/EIA-568-B-2.1, draft 9 standards, and drastically reduces both impedance and structural return loss (SRL) when compared to standard 100 MHz wire. Each of the individual pairs is bonded together to help maintain the twist-spacing throughout the line right up to the termination point. Constructed from high-quality cable and a shortened body plug, this design minimizes Near-End Crosstalk (NEXT) levels. Available in a variety of colors to easily color-code your network installation.

- Connectors: Shielded 50-micron gold-plated RJ45 Male to Male
- Conductor: 24AWG Stranded Copper
- 60% braid over 100% foil shield
- Jacket: PVC



Cat5e Assembled Patch Cables

A cost effective network patching solution that doesn't sacrifice quality

For voice/data/video distribution, These cables will handle bandwidth intensive applications up to 350MHz and will drastically reduce both impedance and structural return loss (SRL) as compared to standard 100MHz wire. Each of the individual pairs are bonded together, helping to maintain the twist spacing throughout the line right up to your termination point. High quality wire and a shortened body plug will keep NEXT levels to a minimum. Available in a variety of colors for easy color-coding.



Shielded Cat6a Snagless Patch Cables

The next generation of networking

These network cables enable 10-Gigabit data transmission over a 4-conductor twisted pair copper cable, allowing connection distances of up to 100m. Current Cat6 cabling systems may only support 10-Gigabit Ethernet over limited distances. The Cat6a draft extends the Cat6 electrical specifications from 250MHz to 500MHz. It also proposes a new measurement for Power-Sum Alien crosstalk to 500MHz. Alien crosstalk is a coupled signal in a disturbed pair arising from a signal in a neighboring cable.

- Supports IEEE 802.3af® and is DTE power compliant
- Compatible with T568A and T568B wiring
- Provides NEXT performance beyond 600MHz
- Low profile hood is ideal for high density switch applications
- A snagless hood design
- PoE rated to four times the standard



SonicWave™ RCA Component Video Cables

High quality connection for all video resolutions up through 1080i hi-def

State of the art performance through advanced cable design, construction and materials.

- Fully shielded for complete immunity to EMI/RFI interference: (2) 80% + OFC copper braids, plus 100% overlapped foil
- Silver-coated, oxygen-free copper conductors
- 24k gold-plated connectors
- Silver-solder construction
- Flexcable™ ultra-flexible PVC jacket for easy installation
- Maximum fidelity 75-Ohm coaxial cable
- Lifetime warranty



SonicWave™ RCA Component Video + Digital Audio Cables

A great choice for home theater audio and video

State of the art performance through advanced cable design, construction and materials.

- Fully shielded for complete immunity to EMI/RFI interference: two 80%+ OFC copper braids, plus 100% overlapped foil
- Silver-coated, oxygen-free copper conductors
- 24k gold-plated connectors
- Silver-solder construction
- Flexicable™ ultra-flexible PVC jacket for easy installation
- Maximum fidelity 75-Ohm coaxial cable
- Lifetime warranty



SonicWave™ 3-BNC Component Video Cables

Professional grade for high definition and progressive scan video applications

State of the art performance through advanced cable design, construction and materials.

- Fully shielded for complete immunity to EMI/RFI interference: (2) 80% + OFC copper braids, plus 100% overlapped foil
- Silver-coated, oxygen-free copper conductors
- 24k gold-plated connectors
- Silver-solder construction
- Flexicable™ ultra-flexible PVC jacket for easy installation
- Maximum fidelity 75-Ohm coaxial cable
- Lifetime warranty



SonicWave™ 5-BNC Component Video Cables

Professional grade performance for RGBHV applications

State of the art performance through advanced cable design, construction and materials.

- Connectors: 5-BNC: Red, blue, green, gray and white
- Broadcast quality 75-Ohm component video cables feature silver-plated oxygen-free copper center conductors
- Three layers of shielding: (2) 80% + OFC copper braids and (1) 100% overlapped foil provide maximum immunity to environmental EMI/RFI
- SplitLok™ precision-machined 24k gold-plated connectors with split center pins ensure superior signal transfer
- Lifetime warranty



CMG-Rated Component Video Cables

Provides easier in-wall installation where CMG rating is required

Video installations in educational and commercial settings often require in-wall rated cable. Our CMG-rated line was specifically engineered to meet this requirement while overcoming common challenges faced by installers in these environments. Low profile connectors (1.41in total depth) save valuable space in the gang box. This cable is constructed from three 75 Ohm coaxial cables using 26AWG center conductors and features a tinned copper braid that provides 92% coverage over a foil shield. This design protects the cable from any EMI/RFI interference and ensures that the highest quality signal is transferred for optimal video performance. CMG-rated cables meet many NEC requirements for Communications Cables General Purpose In Wall Use.

- Low profile – 1.41 inch connector
- 3RCA Male to Male Component Video cable
- CMG, FT4, CM, CL3, CL2, CMX, CL3X, and CL2X Rated



Velocity™ RCA Component Video + Audio Cables

HDTV quality video together with left/right audio

Velocity RCA Component Video cables provides improved picture and sound quality when compared to ordinary “out of the box” cables. Low-loss, 75-Ohm, oxygen-free, copper center conductors provide improved picture quality and performance.

- Easy connection of component video and stereo audio
- Twisted construction in audio conductors prevents EMI/RFI noise interference
- 24k gold-plated connectors ensure long-lasting quality



Plenum Rated RCA Component Video Cables

For high quality video systems in commercial environments

Plenum Rated Component Video Cables are designed to meet stringent building codes for placement of low voltage wiring within a commercial building. This plenum rated video cable is constructed from three precision-machined 75 Ohm coaxial cables, and uses our precision-machined RCA connectors featuring our SplitLok™ centerpins for a solid and reliable connection. Each coaxial cable features a 26AWG tinned copper center conductor covered by aluminum polyester tape and 92% tinned copper braid for 100% shield coverage.

- CMP-rated jacket
- 26AWG center conductors
- Precision-machined connectors



Plenum Rated Component Video Cable

CMP-rated plenum jacket; Low profile RCA connectors and small cable diameter enable easier in-wall installation

Audio/Video installations in educational and commercial settings often require plenum rated cabling. Low profile connectors (1.5in total depth) save valuable space in electrical boxes. This cable is constructed from three 75 Ohm coaxial cables using 26AWG center conductors and features a tinned copper braid that provides 92% over foil shield. CMP rating provides the fire protection required to run within walls and air plenums without the need for conduit.

- CMP-Rated Cable Jacket
- Low profile RCA connectors
- Lifetime warranty



Plenum Rated Component Video + Analog Audio Cables

Distribute HDTV quality video together with left/right audio

Plenum Rated Component Video Cables are designed to meet stringent building codes for placement of low voltage wiring within a commercial building. This plenum rated audio/video cable is constructed from five precision-machined 75 Ohm coaxial cables, and uses our precision-machined RCA connectors featuring our SplitLok™ centerpins for a solid and reliable connection. Each coaxial cable features a 26AWG tinned copper center conductor covered by aluminum polyester tape and 92% tinned copper braid for 100% shield coverage.

- CMP-rated jacket
- 26AWG center conductors
- Precision-machined connectors



Plenum Rated 5-BNC Component Video Cables

Professional quality solution for HDTV or RGBHV installations

Plenum Rated Component Video Cables are designed to meet stringent building codes for placement of low voltage wiring within a commercial building. This cable is constructed from five precision-machined 75 Ohm coaxial cables, and uses our precision-machined BNC connectors for a solid and reliable connection. A CMP-rated PVC cable jacket and FEP inner insulators provide the fire protection required to run this cable within walls and air plenums without conduit.

- CMP-rated jacket
- 26AWG center conductors
- Precision-machined connectors



SonicWave™ S-Video Cables

Strong performance from standard definition sources

SonicWave S-Video Cables are meticulously crafted to ensure full, accurate, interference-free delivery of critical video signals. Silver-plated oxygen-free copper center conductors and nitrogen-foamed PE dielectric combine with CU Shielding Technology™.

- Connectors: 4-Pin Male to 4-Pin Male
- Three layers of shielding: (2) 80% + OFC copper braids and (1) 100% overlapped foil
- 24k gold-plated precision connectors ensure positive signal transfer
- Silver-soldered to eliminate the negative effects of dissimilar metals



SonicWave™ S-Video Splitter Cables

Maintain image quality over longer runs

When your S-Video cables can't go the distance, the SonicWave S-Video Separator is the answer. These cables are designed to allow you to send the luminance signal over one cable and the chrominance signal over another cable. Using these separators along with high quality RCA video cables will allow you to run S-Video signals in excess of 50ft with no noticeable signal loss. Individually shielded low-loss dual 75-Ohm silver-coated oxygen-free copper wire delivers the most accurate resolution and color. CU Shielding Technology™ provides three layers of shielding; two 80%+ OFC copper braids and one 100% overlapped foil. The 24k gold-plated connectors ensure long lasting performance free from oxidation.

- Send luminance (black and white) and chrominance (color) signals through (2) separate cables
- Signals can be re-combined at opposite ends with a second cable assembly
- Available with RCA or BNC connectors



Plenum Rated S-Video Cables

Meet building codes for commercial installations

SonicWave Plenum Rated S-Video Cables are designed to meet stringent building codes for placement of low voltage wiring within a commercial building. The air space above a suspended ceiling or plenum is a common location for runs of low voltage cables. These Plenum Rated S-Video Cables are constructed from two precision-machined 75-Ohm coaxial cables.

- CMP-rated jacket
- 26AWG center conductors
- Precision-machined connectors
- 92% tinned copper braid shield over foil shield
- Lifetime warranty



SonicWave™ S-Video + Stereo Audio Cables

Video and stereo audio together with one set of cables

SonicWave S-Video/Audio combination cables are meticulously crafted to ensure full, accurate and interference-free delivery of critical video and audio signals.

- Connectors: (1) S-Video + (2) RCA
- Silver-plated oxygen-free copper center conductors
- Three layers of shielding: (2) 80% + OFC copper braids and (1) 100% overlapped foil
- 24k gold-plated precision connectors ensure positive signal transfer
- Silver-soldered to eliminate the negative effects of dissimilar metals
- Flexicable™ ultra-flexible PVC jacket for easy installation



SonicWave™ S-Video + Digital Audio Cables

Video and digital surround sound with one set of cables

SonicWave S-Video + Digital Audio Cables are meticulously crafted to ensure full, accurate, interference-free delivery of critical video and audio signals.

- Connectors: (1) S-Video, (1) RCA
- Silver-plated oxygen-free copper center conductors
- Three layers of shielding: (2) 80% + OFC copper braids and (1) 100% overlapped foil
- 24k gold-plated precision connectors ensure positive signal transfer
- Silver-soldered to eliminate the negative effects of dissimilar metals
- Flexicable™ ultra-flexible PVC jacket for easy installation



Plenum Rated S-Video + Stereo Audio Cables

For commercial audio/video installations

Our Plenum Rated S-Video + Stereo Audio Cables are designed to meet stringent building codes for placement of low voltage wiring within a commercial building. Placement of low voltage cables within the plenum, or air space above a suspended ceiling requires the installer to use materials that limit the release of smoke and fumes in the event of a fire. These are commercial grade cables constructed of 75-Ohm coaxial cable.

- CMP-rated jacket
- 26AWG center conductors
- Precision-machined connectors
- Lifetime warranty



Velocity™ S-Video Cables

Strong video performance from standard definition sources

Velocity S-Video Cables deliver a strong combination of performance and value that ensure a lifetime of dependable performance. Velocity S-Video Cables are a great choice for home theater use.

- Best value for audio/video enthusiasts on a budget
- Oxygen-free copper conductors deliver all the detail, color and brightness you expect from your S-Video component
- 24k gold-plated connectors ensure long-lasting quality - free from oxidation
- Ultra-flexible PVC jacket for easy installation



Value Series S-Video Cables

Quality, cost effective video connections

The Value Series S-Video Cables are constructed with high quality, multiple conductors delivering extraordinary video images. Separate conductors carry the Y-component (Chrominance) and the C-component (Luminance), providing better picture quality than a composite video cable.

- Connectors: 4-Pin mini-DIN Male to Male
- Better picture quality than with a composite video cable
- Suitable for DVD, game system, satellite and cable TV
- Compatible with most PCs and notebooks with 7-Pin TV output jacks



Value Series S-Video + 3.5mm To RCA Video + Stereo Audio Cables

Quickly and easily connect your PC to your TV

Value Series S-Video + 3.5mm To RCA Video + Stereo Audio Cables allow you to connect your multimedia PC to your television with ease. This precision-engineered adapter cable connects the S-Video out of your computer to a TV, thus eliminating the need for several cables and/or adapters.

- Connectors: S-Video Male and 3.5mm Plug to 3RCA Plug
- Convert from composite S-Video to RCA or vice-versa
- One piece solution, which eliminates couplers that cause signal loss
- Gold terminals ensure long-lasting, corrosion-free connections
- Fully molded connectors provide excellent strain relief



CMG-Rated S-Video Cables

Provides easier in-wall installation where CMG rating is required

Video installations in educational and commercial settings often require in-wall rated cable. Our CMG-rated line was specifically engineered to meet this requirement while overcoming the common challenges faced by installers in these environments. Low profile connectors (1.24 in total depth) save valuable space in the gang box. This cable has two 26AWG center conductors to ensure signal integrity in the installation. It also features drain wire with 92% minimum coverage braid and foil shield, which prevents signal interference including EMI/RFI. CMG-rated cables meet many NEC requirements for Communications Cables General Purpose In Wall Use. Always check with your local authority on building requirements to verify cable requirements before beginning any installation.

- Low profile – 1.24 inch connector
- S-Video Male to Male cable
- CMG, FT4, CM, CL3, CL2, CMX, CL3X, and CL2X Rated



Velocity™ S-Video + Audio Cables

Video and audio together with one set of cables

- Connectors: Video: 4-Pin DIN Male to 4-Pin DIN Male
Audio: RCA Plug x2 to RCA Plug x2
- Oxygen-free copper conductor delivers high-quality audio and video
- 100% foil and braid shield protects against noise and interference
- Twisted-pair construction reduces RFI and EMI
- 24k gold-plated connectors ensure long-lasting quality



S-Video + RCA Audio Cables

Convenient, cost effective audio/video connections

Value Series S-Video/RCA Cables are the right choice for connecting your VCR, DVD, TV and other audio/video equipment to your TV or receiver. The S-Video component is constructed with dual 75-Ohm coaxial cable that delivers high-quality video images. The dual coax design carries the Video (Y) signal separate from the Color (C) providing higher resolution and better picture quality. The dual audio conductor is 90% spiral-wrapped with tinned-copper, which provides shielding against EMI and RFI interference.

- Audio and video together in a single cable assembly
- Available with an added composite video connection



SonicWave™ RCA Composite Video Cables

Maximum performance from a traditional connection

- Connectors: RCA Male to RCA Male
- Precision 75-Ohm coaxial video cable
- Silver-plated oxygen-free copper center conductor
- (3) layers of shielding: (2) 80% + OFC copper braids and (1) 100% overlapped foil
- SplitLok™ precision-machined 24k gold-plated connectors with split center pins ensure superior fit
- Silver-soldered to eliminate the negative effects of dissimilar metals
- Flexcable™ ultra-flexible PVC jacket for easy installation



SonicWave™ RCA Audio/Video Cables

Composite video and L/R audio in a classic configuration

SonicWave RCA Audio/Video Cables are meticulously crafted to ensure full, accurate and interference-free delivery of both image and sound.

- Connectors: RCA Male to RCA Male
- Precision 75-Ohm coaxial video cable
- Silver-plated oxygen-free copper center conductor
- (3) layers of shielding: (2) 80% + OFC copper braids and (1) 100% overlapped foil
- SplitLok™ precision-machined 24k gold-plated connectors with split center pins ensure superior fit



Plenum Rated Audio/Video Cables

Composite video plus stereo audio for commercial installations

Plenum Rated Audio/Video Cables are designed to meet stringent building codes for placement of low voltage wiring within a commercial building. The plenum, or air space above a suspended ceiling, is a common location for such wiring.

- CMP-rated jacket
- FEP inner insulation
- 26AWG center conductors
- 92% tinned copper braid shield over foil shield
- Precision machined connectors
- Lifetime warranty



Plenum Rated Audio/Video Cables, M/M

Low profile RCA connectors for easier in-wall installation

Audio/video installations in educational and commercial settings often require plenum rated cabling. Our plenum rated line was engineered to overcome common challenges faced by installers. Low profile connectors save valuable space and enable easier in-wall connections. Our small-diameter cable design further reduces the space and clearance required to run the necessary cabling through walls and plenum air spaces. These cables are constructed with three 75-Ohm coaxial cables using 26AWG center conductors and feature a tinned copper braid providing 92% over foil shield. The CMP rating provides the fire protection required to run within walls and air plenums without the need for conduit.

- CMP-Rated cable jacket
- Low profile RCA Connectors (1 1/2" total depth)
- Small-diameter cable (1/4" diameter)
- (3) 26AWG coax with foil shield and 92% braid
- Lifetime warranty



Velocity RCA Composite Video Cables

Durable, dependable performance for standard definition video

Velocity RCA Composite Video Cables deliver a strong combination of performance and value. High quality materials and construction ensure a lifetime of dependable performance. Composite Video connections deliver a reliable analog signal. Velocity cables are a great choice for everyday use.

- Low-loss 75-Ohm oxygen-free copper wire and foam dielectric
- 24k gold-plated connectors for long-lasting quality
- OFC braid shield to protect against EMI/RFI interference
- Fully molded connectors for durability and strain relief



Simplex 9/125 Single-Mode Color Fiber Patch Cables

Color coordinate your high speed single-mode fiber optic patching systems for easy identification

9/125 Single-Mode Fiber Patch Cables provide high bandwidth and transmission rates and support longer distances, but are still cost effective. These multicolored fiber optic patch cables enable you to quickly identify various applications present in your fiber distribution system. The connectors on each end are color-coded for easy identification in a congested patch field.

- Perfect for use in Gigabit Ethernet applications
- Headroom for tomorrow's higher bandwidth needs
- Lifetime warranty
- Buffer material: PVC
- Buffer OD: 900µm
- Jacket material: PVC (OFNR-rated)
- Jacket OD: 3.0mm
- Attenuation @1310 nm: 1.0dB/km
- Attenuation @1550 nm: 0.75dB/km
- Crush resistance: 750N/cm



Plenum Rated 9/125 Simplex Single-Mode Fiber Patch Cables

For high speed single-mode fiber applications - CMP-rated for in-wall installations, colored for easy identification

Get the performance you demand at a price that makes sense with Plenum Rated 9/125 Single-Mode Fiber Patch Cables. They provide high bandwidth and transmission rates and support longer distances. They also provide the fire protection required to run within walls and air plenums without the need for conduit. Perfect for use with high speed networks while providing headroom for future bandwidth requirements. These multi-colored fiber optic patch cables enable you to quickly identify various applications present in your fiber distribution system. Additional lengths, colors and connectors are available for quick delivery through our custom cable capabilities. For more information on custom cable, contact your sales representative.

- Perfect for use in Gigabit Ethernet applications
- Headroom for tomorrow's higher bandwidth needs
- Ideal for longer distance applications
- CMP-rated cable jacket provides the fire protection required to run these cables within walls and air plenums without the need for conduit



Duplex 62.5/125 Multimode Fiber Patch Cable TAA Compliant

62.5/125 micron cable for fast Ethernet, fibre channel, ATM, Gigabit Ethernet, or any application that requires high speed data transfer

With LC to LC termination, this high-quality fiber optic patch cable is specifically designed for fast Ethernet, fibre channel, Infiniband®, ATM and Gigabit Ethernet applications. The small LC connectors satisfy the need for higher port density both in the telecom room and the work area, and offer twice the port density of traditional SC and ST fiber connectors. The LC connector with its RJ-style latch clip design is easy to engage and disengage, and gives each connection greater durability in resisting pulls, strains, snags and impacts during cabling installs and maintenance.

Interoperability:

- Insertion Loss Max 0.75dB
- Return Loss Min 20dB
- Fiber Numerical Aperture 0.275 +/- 0.015
- Lifetime warranty



LSZH Duplex 62.5/125 Multimode Fiber Patch Cables

High speed patch cables for use where protection from toxic and corrosive gasses is critical

High quality 62.5/125 Low smoke Zero-Halogen (LSZH) Fiber Patch Cables are designed to meet or exceed industry specifications. Use to connect fiber optic equipment to fiber optic cross-connects, interconnects and information outlets. Each cable is individually 100% optically inspected and tested for insertion loss and quality. LSZH jackets are composed of materials that lessen the emissions of smoke and halogens when the cable is exposed to extreme temperatures. This construction makes LSZH cables ideal for use where the protection of people and equipment from harmful corrosive gasses is absolutely critical.

- LSZH jackets provide protection from toxic and corrosive gasses in poorly ventilated spaces and other areas where it is most critical
- Fully compatible with multimode fiber applications
- Perfect for use in Gigabit Ethernet applications
- Lifetime warranty against defects of materials and workmanship



Plenum Rated Duplex 62.5/125 Multimode Fiber Patch Cables

For high speed multimode fiber applications - CMP-rated for in-wall installations, colored for easy identification

High quality, Plenum Rated Fiber Patch Cables are designed for Ethernet, multimedia or communication applications. Each cable is 100% optically inspected and tested for insertion loss before you receive it. The pull-proof jacket design surrounds the popular 62.5/125 multimode fiber. These cables also provide the fire protection required to run within walls and air plenums without the need for conduit. Multi-colored fiber optic patch cables allow you to quickly identify various applications present in your fiber distribution system.

- Fiber Size: 62.5/125 micron
- Type: Multimode; duplex
- Color-coded connector keys available in orange, red, blue, green and black
- 100% optically inspected and tested for insertion loss
- CMP-rated cable jacket provides the fire protection required to run these cables within walls and air plenums without the need for conduit
- Immune to electrical interference



Duplex 50/125 Multimode Fiber Optic Patch Cables

For high speed multimode fiber applications

Cost effective solution that provides higher bandwidth and transmission rates and supports longer distances with lower loss than 62.5/125 fiber. Specifically designed for use with today's narrower aperture components, this cable is fully compatible with multimode applications. The patented injection molding process provides each connection greater durability in resisting pulls, strains and impacts from cabling installs.

Each cable is 100% optically inspected and tested for insertion loss before you receive it. A pull-proof jacket design surrounds the popular 50/125 multimode fiber, immune to electrical interference.

- Buffer material: PVC
- Buffer OD: 900 µm
- Jacket material: PVC (OFNR-rated)
- Jacket OD: 3.0 mm
- Attenuation @850 nm: 3.75 dB/km
- Attenuation @1310 nm: 1.5 dB/km
- Min. bandwidth @850 nm: 160 kHz/km
- Min. bandwidth @1310 nm: 500 kHz/km
- Maximum tensile load: 100 N/cm
- Loaded min. bend radius: 5cm
- Unloaded min. bend radius: 3cm
- Crush resistance: 750 N/cm
- Impact resistance: 1000 cycles
- Flex resistance: 5000 cycles



LSZH Duplex 50/125 Multimode Fiber Patch Cables

High speed patch cables for use where protection from toxic and corrosive gases is critical

The 50/125 Low smoke Zero-Halogen (LSZH) Fiber Optic Patch Cables are designed to meet or exceed industry specifications. These fiber patch cables are perfect for Fast Ethernet, Fibre Channel, ATM and Gigabit Ethernet applications. Use to connect fiber optic equipment to fiber optic cross-connects, interconnects and information outlets. Each cable is individually 100% optically inspected and tested for insertion loss and quality. LSZH jackets are composed of materials that lessen the emissions of smoke and halogens when the cable is exposed to extreme temperatures. This reduces the amount of harmful toxic and corrosive gases that cabling made with plastic materials would otherwise emit into the air during combustion. LSZH cables are ideal for use where the protection of people and equipment from harmful corrosive gasses is absolutely critical.



Plenum Rated Duplex 50/125 Multimode Fiber Patch Cables

For high speed multimode fiber applications - CMP-rated cable jacket enables in-wall installation without the use of conduit

Get the performance you demand at a price that makes sense with Plenum Rated 50/125 Multimode Fiber Patch Cables. They provide higher bandwidth and transmission rates and support longer distances with lower loss than 62.5/125 fiber, but are still cost effective. Perfect for use with today's narrower aperture components, they are fully compatible with multimode applications. The 50/125 multimode patch cables are well-suited for protocols such as Ethernet, Fibre Channel, Infiniband, ATM and Internet Protocol. The plenum rating provides the fire protection required to run within walls and air plenums without the need for conduit.

- Buffer OD: 900µm
- Attenuation @850 nm: 3.75dB/km
- Attenuation @1310 nm: 1.5dB/km
- Min. bandwidth @850 nm: 160kHz/km
- Min. bandwidth @1310 nm: 500kHz/km
- Maximum tensile load: 100N/cm
- Loaded min. bend radius: 5cm
- Unloaded min. bend radius: 3cm
- Crush resistance: 750N/cm
- Impact resistance: 1000 cycles
- Flex resistance: 5000 cycles



10Gb Duplex 50/125 Multimode Fiber Patch Cable TAA Compliant

LOMMF, Laser-optimized "Aqua fiber" that's blazing fast for LED/VCSEL laser light sources and 10 gigabit applications.

Get blazing-fast 10 gigabit performance with laser-optimized multimode fiber (LOMMF) cables. Besides fully providing backward compatibility with existing 50/125 equipment, they also provide the performance headroom required to support LED and VCSEL laser light sources, and 10 gigabit Ethernet applications.

All Measurements @ 1310nm MM

Attenuation

- Insertion Loss Max 0.75dB
- Back Reflection Min 20dB
- Ferrule Compression Force 7.8N to 11.8N
- Innerbody pushout force from outerhousing 10lbs
- Ferrule holder pushout force from innerbody 10lbs
- Ferrule creep after heat aging @ 80degC-3 days <0.001 in.

Temp/Humid Change in Attenuation <0.2dB

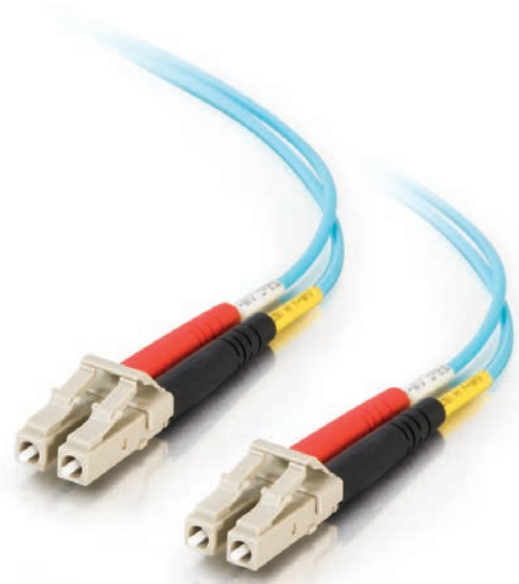
- Cold -10C, 4 days
- Dry Heat 70C, 4 days
- Damp Heat 40C/93%RH 4 days
- Insertion Loss Max 0.75dB
- Return Loss Min 20dB

Durability Change in Attenuation <0.2dB

- Drop 8 drops from 1.8m
- Engagement & Separation Force Max 19.6 N
- Mechanical Endurance 500 cycles
- Insertion Loss Max 0.75dB
- Return Loss Min 20dB

Vibration Change in Attenuation

- Vibration 3 axis, 30 min
- Change of Temp (Nb) -10 to 70C, no RH, 5 cycles, 30 min
- Insertion Loss Max 0.75dB
- Return Loss Min 20dB



Duplex 9/125 Single-Mode Fiber Patch Cables

Color coordinate your high speed single-mode fiber optic patching systems for easy identification

9/125 Single-Mode Fiber Patch Cables provide high bandwidth and transmission rates and support longer distances, but are still cost effective. These multicolored fiber cables enable you to quickly identify various applications present in your fiber distribution system. The connectors on each end are color-coded for easy identification in a congested patch field.

- A cost effective solution that provides higher bandwidth and supports longer distances
- Perfect for use in Gigabit Ethernet applications
- Headroom for tomorrow's higher bandwidth needs
- Color-coded connector keys available in yellow, red, blue, green and black
- Lifetime warranty against defects of materials and workmanship
- Connectors: (2) ST to (2) SC
- Buffer material: PVC



- Buffer OD: 900µm
- Jacket material: PVC (OFNR-rated)
- Jacket OD: 3.0mm
- Attenuation @1310 nm: 1.0dB/km
- Attenuation @1550 nm: 0.75dB/km
- Maximum tensile load: 100N/cm
- Loaded min. bend radius: 5cm
- Unloaded min. bend radius: 3cm
- Crush resistance: 750N/cm
- Impact resistance: 1000 cycles
- Flex resistance: 5000 cycles

Plenum Rated 9/125 Duplex Single-Mode Fiber Patch Cables

For high speed single-mode fiber applications - CMP-rated for in-wall installations, colored for easy identification

Get the performance you demand at a price that makes sense with Plenum rated 9/125 Single-Mode Fiber Patch Cables. These patch cables provide high bandwidth and transmission rates and support longer distances, but are still cost effective. They also provide the fire protection required to run within walls and air plenums without the need for conduit. Perfect for use with today's high speed networks while providing headroom for tomorrow's higher bandwidth requirements. These multi-colored fiber optic patch cables enable you to quickly identify various applications present in your fiber distribution system. The connectors on each end are color-coded for easy identification in a congested patch field.

- Perfect for use in Gigabit Ethernet applications
- Lifetime warranty against defects of materials and workmanship
- Buffer OD: 900µm



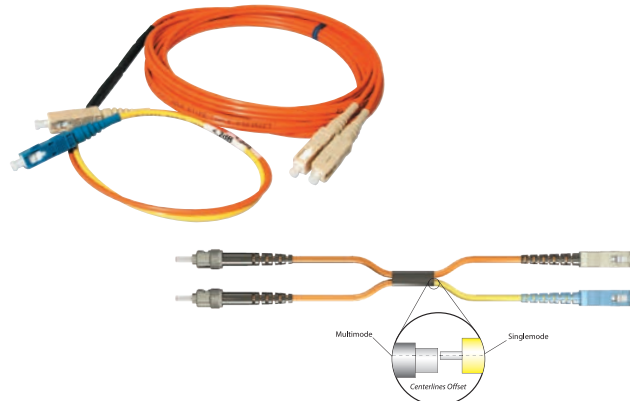
- Jacket OD: 3.0mm
- Attenuation @1310 nm: 1.0dB/km
- Attenuation @1550 nm: 0.75dB/km

Mode Conditioning Fiber Patch Cables

Fully IEEE 802.3z[®] compliant

Mode Conditioning Fiber Patch Cables are used in applications where new high speed Gigabit 1000BASE-LX routers and switches are being deployed into existing multimode plants. Launching a single-mode laser into the center of a multimode fiber can cause multiple signals to be generated, which confuse the receiver at the other end of the fiber. These multiple signals, caused by Differential Mode Delay (DMD) effect, severely limit the cable distance lengths for operating Gigabit Ethernet. A mode conditioning patch cable eliminates these multiple signals by allowing the single-mode launch to be offset away from the center of a multimode fiber.

- Mode: 62.5/125µm
- IEEE 802.3z (Gigabit Ethernet) Compliant
- Assembled with FIS zirconia ferrule connectors
- Masks DMD effects
- Use in place of standard equipment-to-cable plant patch cable



MTP[®] LSZH 50/125 Multimode Fiber Assembly Ribbon Cable

Easier to install - just pull 1 cable with 12 fibers for one easy plug-in.

Make MTP your choice for high-density fiber networks; it's specifically designed for fast Ethernet, Fibre Channel, ATM and Gigabit Ethernet applications. Save time and money with MTP's increased ease of installation - simply pull one cable rather than twelve. Each MTP fiber assembly consists of twelve laser-optimized 10Gb 50/125µm multimode fibers under one PVC (OFNR-rated) jacket. With our MTP, it's possible to run a single cable that automatically terminates twelve fibers in one easy plug-in. Plus, the small form factor of an MTP connector provides a higher port density.

- Connector Dimensions: 7.75 mm height x 61 mm depth
- Jacket Material: LSZH PVC (OFNR riser-rated)
- Jacket OD: 3.0 mm
- Installation Tensile Load: 100 N (445 lbs)
- Long-Term Tensile Load: 50 N (222 lbs)
- Installation Minimum Bend Radius: 4.5 cm (1.8 in)



Duplex 9/125 Single-Mode Fiber Patch Cable TAA Compliant

9/125 micron cable for gigabit ethernet applications

Cost effective solution that provides high bandwidth and transmission rates over longer distances. With LC to LC termination, this high-quality fiber optic patch cable is specifically designed for gigabit ethernet applications. The patented injection molding process provides each connection greater durability in resisting pulls, strains and impacts from cabling installs.

Each cable is 100% optically inspected and tested for insertion loss before you receive it. A pull-proof jacket design surrounds the popular 9/125 single-mode fiber, immune to electrical interference.

Attenuation

- Insertion Loss Max 0.75dB
- Back Reflection Min 40dB
- Ferrule Compression Force 7.8N to 11.8N
- Innerbody pushout force from outerhousing 10lbs



- Ferrule holder pushout force from innerbody 10lbs
- Ferrule creep after heat aging @ 80degC-3 days <0.001 in.
- Temp/Humid Change in Attenuation <0.2dB
- Cold -10C, 4 days
- Dry Heat 70C, 4 days
- Damp Heat 40C/93%RH 4 days
- Insertion Loss Max 0.75dB
- Return Loss Min 40dB

Domestic Fiber Patch Cables

Fiber patch cables to your exact specifications

Domestic Standard Multimode, 10 Gigabit Laser-Optimized and Single-Mode Assemblies are a core part of our business; but we also offer mode-conditioning patch cables, attenuators, Node/Drop service cables, fiber optic launch boxes and multi-fiber assemblies to ensure our customers have the exact solution they need when they need it. Our cables save field termination time and money while providing a superior factory termination. We carefully construct these cables with the installer in mind to ensure reliability and simplicity for any type of application.

- Faster, easier installation
- Pulling eyes, identification labels and spooled solutions reduce time required for installation
- Cables are fully tested and ready for installation
- Factory terminated connectors provide improved end-to-end performance
- Quick turn-around time
- Custom preterminated fiber solutions ship in as little as three business days



4-Port USB 2.0 Aluminum Hub

Add 4 USB 2.0 ports to your Mac® or PC

Our aluminum hub conveniently adds four high speed USB 2.0 ports to your desktop or laptop computer. The slim form factor saves space while the port placement and hard-mountable metal base keep the hub in place even when several USB devices are connected. The removable aluminum base can be hard-mounted to your desk. The hub easily slides from that base, and makes it convenient for travel as well. This hub can be self-powered from the USB port, or utilize an AC power supply adapter (included). Downstream ports have automatic connect and speed detection plus overcurrent protection with auto recovery. Add additional hubs to daisy-chain up to 127 devices; this hub delivers high speed data transfers up to 480 Mbps.

- Supports Windows® 98SE/ME/2000/XP/Vista/7 and Mac® OS X or later
- One year warranty



Passive HDMI® & DVI Wall Plate Inserts

Pass-through or adapts HDMI and/or DVI-based signals

Decora® compatible wall plates dress up any home theater, conference room or classroom. These wall plates were designed for ease of installation and to provide the best signal transfer possible. Unlike traditional pass-through wall plates, these digital series wall plates are constructed using four-layer computer grade printed circuit boards. The PCB traces are engineered to maintain the critical impedance necessary to transfer the delicate digital signal. Use these wall plates for HDMI and DVI installations, or use them to convert an HDMI connection to a DVI connection, or vice versa.

- Constructed using 4-layer computer grade PCB
- PCB traces engineered to maintain critical impedance
- Available in HDMI to HDMI, DVI to DVI, HDMI to DVI and DVI to HDMI configurations
- Fits standard electrical boxes and compatible with Leviton Decora brand trim plates
- 20AWG steel



MTP Rack Mount Fiber Optic Enclosures & Panels

Our rugged rack mount enclosures can securely house 3, 6 or 12 pre-terminated modules or adapter panels. They're available in 1, 2 and 4U configurations and feature front and rear doors for convenient access. The top panels also can be removed for additional access, and are equipped with rear knockouts for horizontal cabling entrances. Guaranteed for life, each enclosure is designed to be installed in racks or cabinets supporting 19in or 23in rails. The rack mount ears can also be adjusted to three different depths from front to rear, providing even more flexibility. For additional savings, 1 and 2U rack mount panels are available. Like the enclosures, they can accept 3 or 6 pre-terminated modules or adapter panels.

- Provides a central access point for the fiber optic infrastructure in the data center with safe cable entrances and exits to protect the cable jackets from nicks, cuts and scrapes
- When used with our Quad LC Modules or adapter panels, up to 288 connection points can be achieved in a single 4U enclosure
- Both doors on the 1U enclosures are constructed of steel

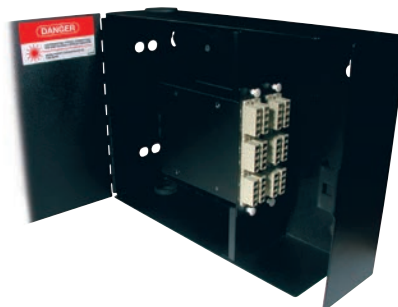


- The 2U and 4U enclosures are equipped with a smoked plastic front door and a steel rear door
- Spool rings for securing and storing excess cable lengths with a safe bend radius
- All units ship with an accessory pack that includes mounting screws, a cable ID label for marking terminations, cable ties and rectangular cable holders for managing cable terminations
- Lifetime warranty

Wall Mount Fiber Optic Enclosures

Featuring a lifetime guaranteed, 100% steel construction, our wall mount enclosures are designed to secure MTP breakout modules or adapter panels in the horizontal or zone distribution areas. With your choice of sizes including 2, 4 and 12 modules, these heavy-duty enclosures feature a low profile that requires little wall space, as well as a large routing space for accessible patch cabling entrance.

- Ideal for small to large horizontal or zone distribution points with a low profile design to reduce the amount of wall space needed
- Provides a central access point for the fiber optic infrastructure in the data center with safe cable entrances and exits to protect the cable jackets from nicks, cuts and scrapes
- When used with our Quad LC Modules or adapter plates up to 288 connection points can be achieved in a single enclosure
- Offers the option of 2, 4 or 12 module or adapter panel configuration
- Custom or pre-loaded configurations also available
- Large top-and-bottom grommeted holes provide easy entrance for the horizontal trunk cables



- A latching front door, stamped with knockouts for optional locks, provides convenient access to the enclosed modules
- Spool rings for securing and storing excess cable lengths with a safe bend radius
- Heavy duty steel construction

MTP Fiber Distribution Breakout Modules

MTP Breakout Modules provide the mechanical distribution of the 12-strand MTP connector. Housed in a rugged steel enclosure that's guaranteed for life, these durable modules arrive fully loaded with the pre-terminated and tested MTP breakout harness - which not only reduces installation time but also ensures the most robust factory-quality performance and consistency. For additional convenience, our modules snap in either rack or wall mount enclosures and feature scalable designs that can grow with your network system.

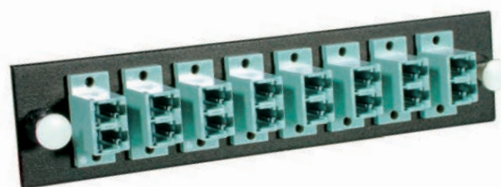
- Available in 16 off-the-shelf configurations - supporting conventional terminations such as LC, SC and ST and allowing standard patch cables to easily attach the network hardware to the fiber optic infrastructure
- Custom modules supporting other fiber types can also be turned around quickly
- Offers a small footprint: 1.125in H x 5.125in W x 4.5in D
- Adapter panels available with a wide variety of configurations
- Shipped with a helpful test report highlighting optical characteristics - ideal for calculating your optical budget



Adapter Panels

The Q-Series Fiber Distribution System was designed with legacy installations in mind. We offer a comprehensive line of adapter panels that easily installs in any of our enclosures or rack mount panels. Each adapter is loaded with mating sleeves. Simply select your connector type and plug and play.

- Available in 27 off-the-shelf configurations - supporting conventional terminations such as LC, SC and ST and allowing standard patch cables to easily attach the network hardware to the fiber optic infrastructure
- Custom panels supporting other fiber types can also be turned around quickly
- Offers a small footprint: 1.125in H x 5.125in W
- Adapter panels available with a wide variety of configurations



Cat6 Molded Snagless Patch Cables

High bandwidth for critical applications - choose from nine colors up to 150ft long

- Connector: 50-micron gold-plated RJ45 Male to Male
- Conductor: 24AWG stranded copper
- Molded, snag-free boot prevents unwanted cable snags
- Designed for network adapters, hubs, switches, routers, DSL/cable modems, patch panels and twisted pair applications
- Standard: Cat6 TIA/EIA-568-B-2.1



Cat6 Snagless Patch Crossover Cables

Get maximum speed when connecting peer-to-peer

Connect your computers peer-to-peer and get 550MHz of bandwidth with these Cat6 Snagless Patch Crossover Cables. By reversing the transmit and receive pairs on one end of the cable, you can connect computers directly to each other without needing a hub. They also are ideal for adding hubs without a crossover port!

- Ultra-flexible jacket makes installation easy
- Snagless, molded strain relief provides increased flexibility and durability

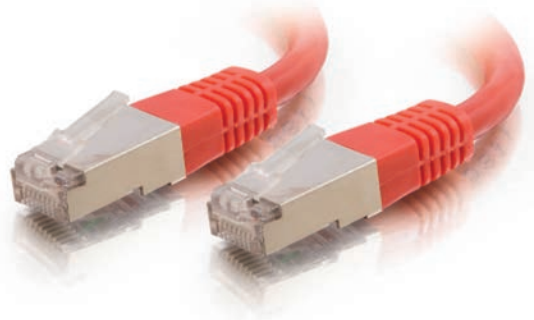


Cat6 Shielded Patch Cables

550MHz bandwidth in an all new snagless design

Stay ahead of the game with these Shielded Cat6 550MHz Snagless Patch Cables. These high speed cables are designed to deliver stable performance to 550MHz for distribution of data, voice and video. These cables will dramatically reduce both impedance and structural return loss (SRL) as compared to standard 100MHz cables.

- PVC jacket
- Designed For: Network adapters, hubs, switches, routers, DSL/cable modems, patch panels and other twisted-pair applications
- Meets or exceeds all Category 6 TIA/EIA- 568-B-2.1, draft 9 standards
- Applications:
 - Gigabit 1000 BASE-T; 100 BASE-T; 10 BASE-T (IEEE 802.3)
 - 4/16Mbps Token Ring (IEEE 802.5)
 - 100 VG-AnyLAN
 - 100Mbps TP-PMD (ANSI X3T9.5)
 - 55/155Mbps ATM
 - T1 voice



Made In The USA Cat5e & Cat6 Snagless Patch Cables

Snagless molded boot patch cable for high performance networking applications

- Connector: 50-micron gold plated RJ45 Male-to-Male
- Conductor: 4-pair 24AWG stranded copper
- Molded, snag-free boot prevents unwanted cable snags
- 1000 BASE-T; 100 BASE-T; 10 BASE-T (IEEE 802.3[®])
- 4/16Mbps Token Ring (IEEE 802.5[®]); 100 VG-AnyLAN
- 100Mbps TP-PMD (ANSI X3T9.5); 55/155Mbps ATM
 - Designed for: Network adapters, and other twisted pair applications
 - Wired: TSB 568B (AT&T 258A)
 - Certification: TIA/EIA

Note: Custom lengths are available, contact your sales representative for details.



Cat5e Molded Shielded Patch Cables

Fully shielded network cables for noisy environments

To protect your high speed network from noise and electromagnetic interference, use Shielded Enhanced Cat5e Molded Patch Cables. Each cable meets all Cat5e TIA/EIA standards. The molded boot provides extra strain-relief and durability.

- Connector: Shielded 50-micron gold plated RJ45 Male to Male
- Conductor: 4-pair 24 AWG Stranded STP
- Jacket: PVC
- Foil shielding with drain wire
- Applications: 1000 BASE-T; 100 BASE-T; 10 BASE-T (IEEE 802.3(r))
- Designed For: Network Adapters, Hubs, Switches, Routers, DSL/Cable Modems, Patch Panels and other twisted-pair applications in high-noise environments
- Wired: TSB 568B (AT&T 258A)



Modular In-line Couplers

Designed to connect two patch cables together

If you are trying to link several line cords together, or extending existing modular cable runs, In-line Cat5e Couplers can help you make the right connection. The in-line coupler provides a Female-to-Female feed through connection for easy cable hook-up. Capable of handling LAN speeds of up to 100Mbps, meets TIA/EIA 568A and Power Sum Certified, the Cat5e coupler will meet all of your performance requirements.

- Connectors: 1 RJ45 Female to 1 RJ45 Female
- Type: Straight-Thru RJ45 Cat5e
- Designed For: Data applications
- Use: Extends the length of 2 Cat5e patch cables



TruLink® VGA Over Cat5 Extender

Extend your VGA signal up to 300m over Cat5e

The TruLink VGA Over Cat5 Extender is ideal when you need to place your computer in a remote location. This is common in digital signage applications that are typical in retail stores, houses of worship, classrooms and board rooms where you need video presentation in one room but want the computer to be out of sight and in a safe and secure environment.

- Extend your analog video signal up to 300m (1000ft)
- Cat5e UTP cable enables easy and cost effective in-wall installation
- Ideal for digital signage applications in retail stores, houses of worship, classrooms and board rooms
- Supports the following resolutions using Cat5e cabling:
 - 50m - 2048 x 1536
 - 100m - 1280 x 1024
 - 180m - 1024 x 768
 - 200m - 800 x 600
 - 300m - 640 x 480
- Input/Output Connectors: HD15 Female; power supply: DC 12V 600mA
- RJ45 connectors join the base unit and the remote
- Remote unit required - sold separately



TruLink® VGA With Audio Over Cat5 Extender

Extend your VGA and audio signals up to 1000ft over Cat5e

The TruLink VGA With Audio Over Cat5 Extender is a robust solution that allows you to extend your VGA and 3.5mm audio signal up to 300m (1000ft) over a Cat5e Unshielded Twisted Pair (UTP) cable. Driving VGA and audio signals over Cat5e allows you to take advantage of your existing UTP cable infrastructure for a cost effective and reliable installation.

The TruLink VGA With Audio Over Cat5 Extender solution is ideal for applications where you need to place your computer in a remote location. This is common in digital signage applications typical in retail stores, houses of worship, classrooms and boardrooms where you need video presentation in one room but want the computer to be out of sight and in a safe and secure environment. With the TruLink VGA With Audio Over Cat5 Extender, you can place your display across the room, on another floor, or in another building while your computer remains in a convenient location.

- Cat5e UTP cabling enables easy and cost effective in-wall installation

Note: This solution requires either a 1-Port or 4-Port base unit and a remote unit for each connected monitor. The base unit and remote units are sold separately.



TruLink® DVI Over Cat5 Extender

Extend your DVI-D signal up to 50m over Cat5

The TruLink DVI Over Cat5 Extender is a durable solution that allows you to extend your DVI signal up to 50m (164ft) over two Cat5 Unshielded Twisted Pair (UTP) cables. This solution is ideal for applications where your DVI monitor needs to be placed further than the average 20m DVI cable limitation. Driving a DVI signal over Cat5 allows you to take advantage of your UTP cable infrastructure already installed.

- Extend your digital video signal up to 50m (164ft)
- Ideal for digital signage applications in retail stores, classrooms and boardrooms
- Supports DDC and HDCP
- Supports the following resolutions using Cat5* cabling:
 - 30m - 1600 x 1200 @ 60Hz
 - 50m - 1280 x 1024 @ 60Hz
 - 50m - HDTV resolution up to 1080i
- Input / Output Connectors: DVI-D female



- RJ45 connectors join the Base Unit and the Remote Unit
- Power Supply: DC 5V 1.2A

*Cat6 cables can be used but are not recommended due to the skew of signal pairs

TruLink® VGA Video Splitter/Extender

Split your VGA signal to multiple outputs with or without audio, up to 210ft away

Simultaneously distribute any VGA video signal to up to eight different video outputs up to 210ft while maintaining exact picture quality with the Video Splitter/Extender (VSE). There is no software or complicated interface cards to install. Available with 2, 4 and 8-ports, the VSE is ideal for classrooms, exhibits, trade shows, monitor testing, demonstrations and multimedia presentations. The VSE also is ideal for broadcasting video information such as news headlines, stock prices, airline flights and train schedules.

- Color-coded connectors - HD15 Male input, HD15 Female outputs
- Power and activity LED indicators
- Free technical support and one year warranty
- Suitable for XGA, SVGA, VGA and multi-sync monitors
- Daisy-chain multiple units together for even more outputs



TruLink® UXGA Video/Audio Matrix Switches

Split your video and audio signals from multiple sources to multiple destinations

TruLink Video/Audio Matrix Switches are ideal for distributing audio and video in classrooms, at exhibits, trade shows and demonstrations and for multimedia presentations. These matrix switches enable the broadcast of audio and video from multiple computers to multiple displays. Any one of the inputs can be broadcast to any or all of the outputs. Built-in video signal enhancement allows you to place monitors up to 164ft away while maintaining your video quality. Switch between computers via push buttons or use the included infrared remote control for PC selection from up to 6ft away. TruLink Video/Audio Matrix Switches deliver both performance and value.

- Broadcasts the audio and video outputs from up to two or four computers to up to two or four monitors
- Any one of the inputs can be broadcast to any or all of the outputs
- Simultaneously display an image from one source to one of the monitors and an image from the second source to the second monitor



- Built-in video signal enhancement allows monitors to be placed up to 164ft away
- Use the 3.5mm audio outputs to drive either speakers or earphones
- PC selection via push buttons or IR remote control
- Supports video resolutions up to 2048 x 1536
- Suitable for VGA, SVGA, XGA, SXGA, UXGA and multi-sync monitors
- Broadcasts the audio and video outputs from up to two or four computers to up to two or four monitors

TruLink® 2 & 4-Port UXGA Monitor Switcher/Extenders

Display video output from up to four computers on a single monitor or projector - up to 210ft away

The TruLink Video Switcher/Extender will connect the video outputs of up to four computers to one monitor or projector. Daisy-chain more than one switcher to expand the number of computers you can connect. With the built-in video signal enhancement, you can place the monitor up to 210ft away while maintaining your video quality. No software is required and PC selection is easy. Switch between computers via push buttons or use the infrared remote control for PC selection from up to 6ft away. For use in test bench facilities, data centers, help desks, classrooms and multimedia centers, the TruLink Video Switcher/Extender delivers both performance and value.

- Connect video output from up to four computers on a single monitor or projector
- PC selection via push buttons or IR remote control
- Daisy-chain switches to expand the number of computers connected
- Built-in video signal enhancement allows monitor to be placed up to 210ft away
- Supports video resolutions up to 2048 x 1536



- Suitable for VGA, SVGA, XGA, SXGA, UXGA and multi-sync monitors
- Maximum bandwidth - 450MHz
- Input connectors: HD15 Female
- Output connector: HD15 Female

TruLink® 2 & 4-Port HDMI® Splitters

Split one HDMI audio/video signal to multiple high definition displays

Connect an HDTV receiver, or other audio/video device, to multiple HDTV displays. The TruLink® HDMI Splitter supports HDMI v1.3 features as well as a full range of video resolutions from 480i to 1080p. The splitter is cascadable up to three layers.

- HDMI v1.3, x.v. color®, high speed refresh rates and lossless surround sound
- HDCP-compliant for full playback of high definition content
- Built-in equalizer boosts the signal to allow cascading up to 80ft away
- Supports up to 12-bit color



TruLink® 4 & 6-Port HDMI® Selector Switches

Convenient switching among multiple HDMI sources

Most high definition audio/video components utilize the HDMI interface to provide crystal clear, digital sound and picture. With the wealth of devices now using HDMI it's easy to run out of free HDMI inputs on your TV set or receiver. These 4-Port and 6-Port HDMI Selector Switches solve this problem by providing additional high definition digital inputs for sources such as DVD, Blu-ray™, gaming systems and high definition cable/satellite boxes. Our HDMI Selector Switches offer 3 or 5 rear inputs, plus a convenient front input for temporary connection of gaming systems or HD camcorders and cameras. Both devices are fully compatible with HDCP-enabled sources. Blue front panel LEDs display the HDMI source currently selected.

- HDMI (v1.3 with support for Deep Color, CEC, x.v. Color™, Dolby TrueHD™, DTS-HD Master Audio™)
- Supports 480i, 480p, 720p, 1080i and 1080p resolutions



TruLink® 2-Port DVI-D Splitter

Split 1 DVI-D output for display on 2 DVI-D compatible monitors

The TruLink DVI-D splitter connects two HDTV displays or two computer monitors equipped with DVI inputs. HDCP compatibility means this splitter will work with high definition video for HDTV applications and high resolution PC applications. Compatible with DVI-D equipped PC video cards operating at a maximum resolution of 1920 x 1080 pixels, or with video devices at 480p, 480i, 720p, 1080i, and 1080p scan rates. Built-in DVI repeater allows lossless runs up to 10 meters from the splitter.

- Supports resolutions up to 1920x1080 (1080p)
- Supports EDID and HDCP
- Rugged metal enclosure to prevent damage
- Cascadable up to 4 levels
- Extends DVI-D signals up to 10 meters



TruLink® HDMI® Over Coax

Transmit HDMI 1080p audio and video over one coax cable!

Simplify your demanding digital signage or residential HDMI installation with the new TruLink HDMI over Coax extender solution. This industry first high resolution 1080p HDTV signal solution supports up to a max distance of 390ft (120m) over RG6 coax cable. The installer has the ability to customize any length. The system will auto adjust feedback, equalization and amplification, no matter how long the cable run is. Compared to other Cat5 solutions that have a distance limitation of 40m and require the use of two Cat5 cables, the HDMI over coax provides three times the distance using a single RG6 coax cable.

Connect up to two remote controlled HDMI source signal inputs into the transmitter unit, such as a DVD player and satellite receiver. The transmitter and receiver are inter-connected via a single industry standard RG6 coax cable. The receiver output HDMI signal is then connected to the HDTV, projector or monitor. Both the transmitter and receiver units provide an additional RG6 coax output for cascading to additional units – connecting up to 24 monitors.



- Supports 720p 50/60hz, 1080i 50/60hz, 1080p 50/60hz (4:2:2) & 1080p 24/30hz video resolutions
- Daisy chain up to 24 monitors (Requires extra Receiver)
- Slim Line Remote Control
- No software required
- Video bandwidth: 340Gbps
- HDMI features supported: sRGB, YCbCr, EDID, Auto Lip Sync, Deep Color, XvYCC, Dolby & DTS 7.1, Super Audio PCM, Compatible with HDCP 1.1, 1.2, 2.0Item#

TruLink® A/V Controller

Smart control for teachers, smart design for installers

In today's teaching environment, technology should complement the learning experience, not complicate it. The TruLink A/V Controller is a full-featured solution for easy control of all classroom audio/video equipment; including DVD/Blu-ray™ players, document cameras, projectors and other equipment. Specifically engineered for use in K-12 classrooms, this controller is innovatively simple to install, program and operate.

- Large, backlit buttons for easy identification and quick operation
- On-board real-time clock for easy time and date programming, including automatic start-up and shut-down capability, ensures equipment is ready when needed and powered off at the end of the day to extend equipment life
- Control devices with both serial and infrared control
- Up to 32 commands for control of numerous A/V devices
- Customizable eight button control panel
- Durable construction backed by a three year warranty



Classroom Speakers

Rich classroom audio that meets K-12 technology budgets

These classroom speakers are specifically designed for use in K-12 classrooms to deliver high quality audio from multimedia presentations, video clips, movies and other curriculum throughout the classroom. This line of speakers is offered in both wall mount and ceiling mount configurations to meet the needs of different classroom designs. Available in industry standard 8 Ohm and 70 Volt versions, these speakers ensure long life and quality sound. The Classroom Speakers integrate seamlessly with the TruLink® Audio Amplifier to provide a complete classroom sound system. Additionally, the speakers can be combined with the TruLink® A/V controller and RapidRun® for a complete connected classroom.

- One year warranty



TruLink® Media Gateway Connectivity Panels

The TruLink® Media Gateway suite of connectivity panels offers flexibility, versatility and unique features that are unparalleled in the market

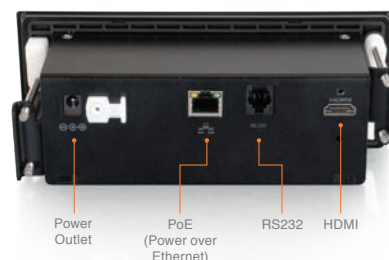
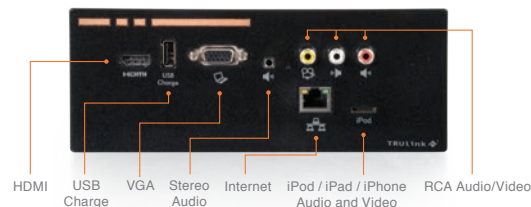
Today, people live an on-the-go lifestyle and the technology you employ needs to keep up with their demands. Individuals want to work and be entertained instantly – utilizing their own content through their own personal technology – just like they would at home.

The ability to easily connect from anywhere and catch up on work, share a video, music file, or utilize a TV or projector to view a presentation provides an extra level of service. This enhanced level of service sets an organization apart from its competitors and ultimately increases loyalty and perceived value.

The TruLink Media Gateway maximizes portable content through easy-to-use, plug and play technology. Auto-sensing and switching allows users to easily switch from device to device by automatically detecting which device is being used, and then switching to the appropriate input.

The Media Gateway's active connectivity panel provides hassle-free connectivity for laptops, iPod®, iPad®, iPhone®, projectors, HDTVs, digital/video cameras, Blu-ray™ or DVD players and game consoles. Advanced connectivity allows easy updates via the network in a matter of seconds, saving thousands of dollars in cost each time new technology is introduced.

- Automatically upscales most analog outputs to 1080p
- Firmware updates via the network save time and money
- iPod®/iPad®/iPhone® enabled
- CEC compliant
- RS232 enables communication with non CEC compliant TVs/devices
- Wall mount brackets eliminate the need to screw into drywall



PRODUCTS & SERVICES

FEATURED PRODUCT – DRE CABLE ASSEMBLY

SCA is proud to introduce the new HDMI-Ethernet-IR cable assembly. This all-in-one, patent pending, solution raises the bar on quality and reliability at a competitive price. It is the best choice for making the connection from visual displays to a DirecTV DRE unit, delivering clear crisp high speed HDMI, Ethernet and IR pass through signals.



PRODUCTS

Single & Multiconductor Cable

- Audio/Video
- Coaxial (RG)
- Communication
- Computer
- Control
- Custom Design
- Data (LAN)
- Fiber Optic
- Industrial
- Instrumentation
- Power, Pump
- Ribbon
- Multi-Pairs
- Plenum
- Robotics
- Shielded
- Non-Shielded
- Welding
- Military Specification
 - Mil-C-17 Coax
 - Mil-C-27500
 - Mil-C-3432
 - Mil-C-55021
 - Mil-C-27072

CUSTOM SOLUTIONS

SCA makes custom cabling effortless for our customers. Our willingness to perform onsite RF engineering evaluations ensures you get the right design solution and cost effective manufacturing techniques that meets your custom requirements.

RF REMEDIATION

SCA is the solution provider. We are the leader and have set the standard in RF signal analysis and cable system management. We know when your system doesn't function your whole operation is vulnerable. SCA can assess and analyze your entire infrastructure quickly and efficiently. We provide on-site system analysis (i.e. surveys, spectrum reports), fix all current efficiency problems, and long term cable management solutions.



(800) 709-8731

www.directvideotv.com
sales@directvideotv.com

